

CORPORATE PROFILE



Technology that speaks your language

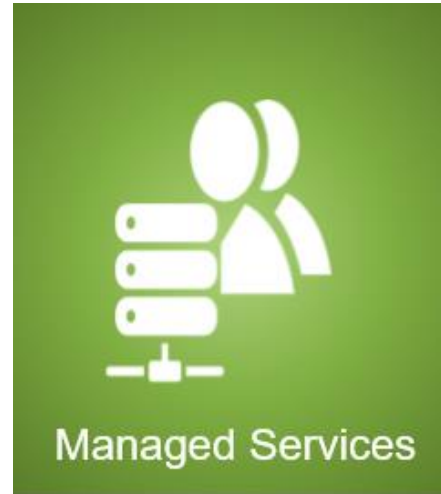
Welcome to solutions that go beyond technology, powered by a dedicated team of specialists who believe that success depends on making your business ... their business.



1. Licenses as legitimated ISP and owns a fully underground backbone infrastructure
2. 38 km of fiber optic infrastructure in Phnom Penh with fully redundant rings.
3. Fully redundant 10Gbps backbone infrastructure.
4. One stop service solution.
5. Return policy guarantee.
6. Service Level Agreement.
7. Key Account Manager.
8. Hotline technical support 27/7.
9. Trusted by some top companies and prestigious governmental and multinationals entities.

Services Domain

TODAY ISP



<ul style="list-style-type: none">→ DPLC→ IPLC→ Internet Service→ Dark Fiber	<ul style="list-style-type: none">→ Co-Location→ Web Hosting→ Network Solutions→ Domain Reseller→ IT Guard	<ul style="list-style-type: none">→ Consultation Service→ Data Center Deployment→ Outsourcing

Telecom Services

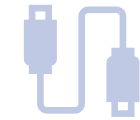
- IPLC
- DPLC
- Internet Service
- Dark Fiber

Managed Service

- Co-Location
- Web Hosting
- Domain Reseller
- Network Solutions
- IT Guard

Professional Services

- Consultation Service
- Data Center Deployment
- Outsourcing



Domestic Connectivity

- Layer 2 VPN
- Dark Fiber



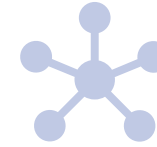
Internet Services

- Dedicated Broadband Internet (DBI)
- Business Broadband Internet (BBI)
- TODAY Simply/Super /Lightning Fast
- TODAY Fiber



International Connectivity

- IPLC
- IP Transit

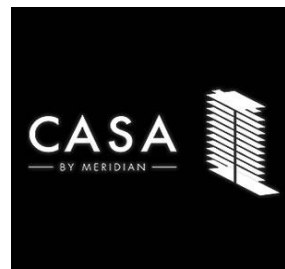


Value Added Service

- Web Hosting
- Domain Reseller
- Network Solutions
- Co-Location

Meet Our Clients

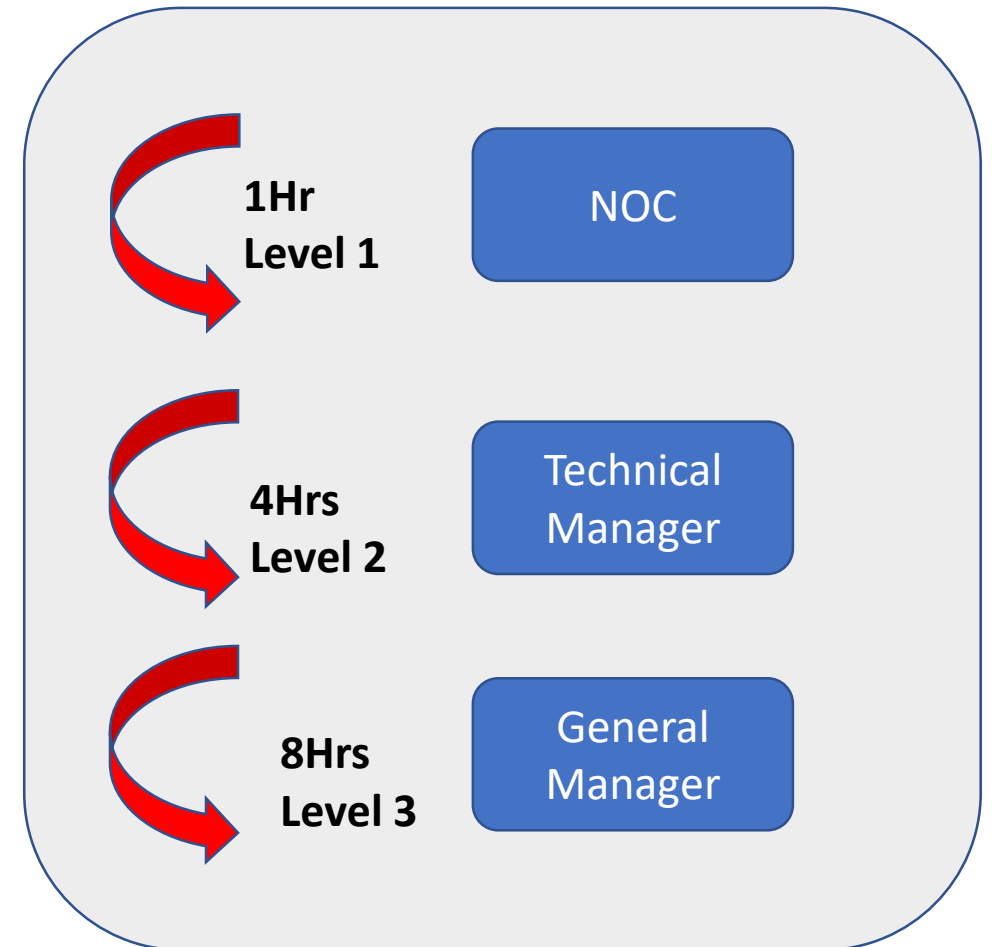
TODAY ISP



Service Level Agreement (SLA)

TODAY ISP

- Competitive network / sites availability
- Guaranteed network throughput & packet loss
- Guaranteed international latency
- TODAY support program, Problem resolution & Escalation matrix
- Maximum Time to FIX (MTTF) per problem severity
- Rebates



Network Operation Center (NOC)

TODAY ISP

- Ensuring 99.97% network availability
- The nerve center of our operations
- Highly qualified, highly trained service professionals providing a level of 24/7 support widely admired in the industry
- Maintains network availability
- Spots and corrects problems even before they happen



- On call 24x7x365
- A powerful round-the-clock single point of contact for all customers
- Equipped with the latest tools to manage customer relationships
- Highly qualified, highly trained service professionals
- Complete commercial and technical support on the spot
- Access multi-channel support
- Web-based trouble ticketing
- Email/telephone/FB Messenger support
- Organized knowledge base with structured, downloadable help documents



THANK YOU